

1961

PRESS GUIDE

1960-61 SCHEDULE

MEMO TO PRESS

Date	Opponent	Site
Dec. 2	Washington	Seattle
Dec. 3	Washington	Seattle
Dec. 9	Oklahoma	Provo
Dec. 10	Miami (Florida)	Provo
Dec. 12	Texas Christian	Provo
Dec. 15	Memphis State	Provo
Dec. 17	New Mexico State	Provo
Dec. 20	Kansas	Provo
Dec. 22	Kent State	Provo
Dec. 27	Louisville	Louisville
Dec. 29-30	Poinsettia Tournament	Greenville, S. C.
	(Louisiana State, Citadel, Furman)	
Jan. 7	Montana	Provo
Jan. 13	Colorado State	Ft. Collins
Jan. 14	Wyoming	Laramie
Jan. 20	Utah	Provo
Jan. 27	Utah State	Provo
Feb. 2	New Mexico	Albuquerque
Feb. 4	Denver	Denver
Feb. 11	Utah State	Logan
Feb. 17	Wyoming	Provo
Feb. 18	Colorado State	Provo
Feb. 23	Utah	Salt Lake City
Feb. 25	Montana	Missoula
Mar. 3	Denver	Provo
Mar. 4	New Mexico	Provo

FRESHMAN SCHEDULE

Jan. 7	Snow College	Provo
Jan. 14	Mesa College	Grand Junction
Jan. 20	Utah Frosh	Provo
Jan. 27	Utah State Frosh	Provo
Feb. 4	Idaho State Frosh	Pocatello
Feb. 8	Weber College	Ogden
Feb. 11	Utah State Frosh	Logan
Feb. 17	Hill Air Force	Provo
Feb. 18	Dugway Proving Grounds	Provo
Feb. 23	Utah Frosh	Salt Lake City
Feb. 24	Snow College	Ephraim
Feb. 25	Dixie College	Provo
Mar. 3	Carbon College	Provo
Mar. 4	Idaho State Frosh	Provo

PRESS PASSES — Requests for working passes should be made directly to Sports Publicity Office a week prior to the game. Women are not allowed in the press box, and the area is reserved for those actually covering the game. Drivers, and others who may accompany those covering the game, will be asked to sit elsewhere.

PRESS BOX — The BYU press box is located on the west side of the playing floor, and is reached through entry of sections AA on the north end of the floor. All parking in the immediate vicinity of the fieldhouse is reserved.

BROADCASTING BOOTHS — Three radio booths are available, including one reserved for the visiting station which is designated the official station by the visiting team.

SERVICES — Complete game statistics — the box score, shooting percentages, shooting charts, and play-by-play — will be supplied at the end of the game.

UNIFORMS — The Cougars will wear white uniforms at home and royal blue on the road.

TABLE OF CONTENTS

The Outlook	2
At a Glance	3
Game Information	4
About the School	6-9
The Golden Years	10-11
Coaching Staff	12-15
Team Rosters	16-17
Sketches of Players	18-23
1960 Results	24
1960 Scoring	25
Fieldhouse, School Records	26-29
Past Champions	30
Tournament Record	31
Athletic Creed	32
News Outlets	33

THE OUTLOOK

After suffering the agonies of last year's 8-17 season, BYU can best express its immediate outlook in one word—"improved."

Says Stan, in his own words: "If our sophomores can gain some experience, and if one or two of our junior college transfers can come through for us, we might have a pretty fair unit before the season is over."

While "improved" described the general outlook, it does not mean the youthful Pumas are strong enough to dominate the league. But it does mean they are ready to move back up the ladder.

No less than eight of the Y's varsity players are sophomores, and five others are transfers. That's a pretty big group of newcomers to fit into the system. But the placid Watts is one coach who will undoubtedly make the most of what he has.

Actually the '61 team will be built around two strong regulars; floor general Gary Earnest (6-0) and all conference pivot man Dave Eastis (6-4). These two have carried the load for the past two seasons.

Eastis, an astute, gritty student of the game, has the most impressive scoring average in BYU history. His 20.1 average in '60 was a school record, and his 21 field goals and 44 points against New Mexico is a mark future stars will have trouble surpassing.

Earnest, who has the touch of a pro, is as smart a player as you will find in the Skyline. His 13.9 average as a sophomore and 12.7 average as a junior may be over-shadowed in the season ahead.

There's a good chance Watts will team three sophomores with Eastis and Earnest for a starting five. The forward line, last year's soft spot, is without a returning letterman. Even so, the forward positions will be stronger with the likes of sophomores Bruce Burton (6-4), Timo Lampen (6-5), Jim Kelson (6-2) and transfers Gayle Butler (6-5), and Scott Iverson (6-3).

If Stan can find a good outside shot among his guards, he can add materially to the team's striking force. He is sure to have help in Gary Batchelor (5-10), Ron Steinke (5-10), letterman Ron Abegglen (5-8), and others.

Neither of the Y's two reserve centers, Lloyd Johnson (6-6) or Jack Manion (6-6) has the experience or finesse to force Eastis out of the post, but both will provide good reserve strength, however.

Unlike last year's squad, the 1960-61 group has already displayed signs of fire and a thirst for contest. With some steady play and a few surprises, the Cougars could return to their familiar haunt in the first division.

AT A GLANCE

RETURNING LETTERMEN (5)

Guard—Gary Earnest, Senior, Regular (319)
 Guard—Ron Abegglen, Senior, Reserve (124)
 Center—Dave Eastis, Senior, Regular (483)
 Guard—Larry Crowley, Junior, Reserve (27)
 Guard—Roland Bevell, Senior, Reserve (6)

LETTERMEN NOT RETURNING (6)

Guard—Dave Barber, Reserve, Mission (16)
 Forward—Mark Miller, Regular, Mission (252)
 Forward—Valoy Eaton, Regular, Graduated (177)
 Forward—Brent Peterson, Reserve, Transferred (37)
 Forward—Ron Bell, Reserve, Left School (115)
 Forward—Frank Berrett, Reserve, Graduated (62)

TRANSFERS (5)

Guard—Robert Wilson (5-11), Weber (Utah)
 Forward—Gale Butler (6-5), American River (Calif.)
 Forward—Scott Iverson (6-3), Cerritos (Calif.)
 Forward—Gene Kunz (6-4), Weber (Utah)
 Center—Jack Mannion (6-6), University of Utah

FRESHMAN LETTERMEN (8)

Guard—Jim Williams (5-10)
 Guard—Ron Steinke (5-10)
 Guard—Gary Batchelor (5-10)
 Center—Lloyd Johnson (6-6)
 Forward—Jim Kelson (6-2)
 Forward—Gail Johnson (6-4)
 Forward—Timo Lampen (6-5)
 Forward—Bruce Burton (6-4)

BYU VICTORIES IN FIELDHOUSE

Year	Won	Lost
1951-52	8	2
1952-53	12	0
1953-54	12	2
1954-55	9	3
1955-56	12	2
1956-57	11	1
1957-58	8	4
1958-59	11	2
1959-60	4	7
	<hr/> 87	<hr/> 23

Last BYU defeat in fieldhouse, 67-87, Montana Feb. 27, 1960.

GAME INFORMATION

Site of Game. George Albert Smith Fieldhouse, located on campus near approximate location of Second East, Eleventh North, Provo.

Game Time: Varsity games will start at 8:05 p.m. Preliminary game begins at 6 p.m., and should be completed by 7:30 p.m. when the varsity teams can begin their pre-game warm-ups.

Team Colors: BYU colors are royal blue and white. White jerseys will be used at home, blue on the road.

Officials: Assigned by Paul Brechler, Commissioner, Mountain States Athletic Conference, Hilton Hotel, Denver 2, Colorado.

Tickets: Tickets will be held for visiting teams per arrangement by contract or conference. Contact Floyd Taylor at Ticket Office in Fieldhouse, Phone FR 4-1211, Ext. 2639.

Scouting Tickets: Make requests through E. R. Kimball, Director of Athletics, at Fieldhouse, Phone FR 4-1211, Ext. 2786.

Publicity. Send all requests for press, radio and television to Dave Schulthess, Director of Athletic Publicity, Public Relations Bldg., Brigham Young University, Phone FR 4-1211, Ext. 2512.

Practice: Should be arranged with E. R. Kimball.

Balls: Moulded ball of Last Bit pattern. Practice balls will be supplied on request.

Hotel: Roberts Hotel 192 South University, 16 blocks south of Fieldhouse.

Transportation: Taxicabs—Yellow, Phone FR 3-2950 Arrow, Phone FR 3-0474.

Railroad—Denver and Rio Grande.

Air Lines—Salt Lake City Terminal, 45 miles north,

Players' Dressing Room Left of entrance—Northeast door. Attendant will meet team and be at your service for the evening. Oranges and ice will be placed in dressing room.

Players' Entrance: Northeast door of Fieldhouse.

Playing Floor: Runs north and south. Dimensions 94 x 50. 14-foot clearance beyond backboards, six feet on each side.

Timing. Four-faced timing device over center of floor.

Players' Benches: East side of floor. Visiting team will occupy seats at right of timer's bench.

Statistics: A complete set of statistics will be supplied visiting coaches and publicists approximately 15 minutes after the end of the game.

Scorers and Timers: Table located at center of floor on east side of Fieldhouse. If visiting teams need such help, qualified personnel will be made available on request.



FOUR SENIORS—Trying to keep warm on one of many road trips during season. They are left to right: Gary Earnest, Dave Eastis, Ron Abegglen and Larry Crowley.

ON THE ROAD

Seattle	Olympic Hotel
Louisville	Sheraton Hotel
Greenville	Jack Tar Poinsett
Fort Collins	Northern
Laramie	Conner
Albuquerque	San Franciscan
Denver	Shirley-Savoy
Logan	Eccles Hotel
Missoula	Hotel Missoula

FACTS ABOUT BYU . . .

(Information on the following pages is designed to give a general picture of the University and the area in which it is located.)

LOCATION

Brigham Young University, which is located on 500 acres in the northeast section of Provo, is in the heart of Utah Valley. Provo is the third largest city in Utah. When joined with Orem (the city to the immediate north), it is classified by the federal government as a "standard metropolitan statistical area." That is, it has a twin city population of at least 50,000. Latest figures released by the government list the population of Provo-Orem area as 106,777 persons, more than half of whom reside within the central cities. Utah Valley is bordered on the west by Utah Lake, on the north by 14,000-foot Mt. Timpanogos, and the east by the Wasatch Mountain Range. Population within the Valley is over 115,000.



Joseph Smith Memorial Building

TRAVEL

Provo is 45 miles south of Salt Lake City, the state capitol, which has a population of 250,000. When new freeways now under construction are completed, the commuting time between Provo and Salt Lake City will be cut to about 50 minutes. Ogden, the second largest city in Utah, is 35 miles north of Salt Lake City. In road miles Provo is 680 miles from Corvallis; 860 from Eugene; 690 from Pullman; 560 from Albuquerque; 760 from Tucson; 630 from Tempe; 465 from Denver; 700 from San Francisco and Los Angeles; and 400 from Boise (all approximate figures). Three air lines service the proximity of Provo, plus two bus lines and two railroads.

ITS LOCATION

FACULTY

BYU is staffed with over 500 faculty members who have obtained degrees from universities located in 35 states and seven foreign countries. More than 45 per cent possess doctoral degrees, one per cent have law degrees, and 40 percent have master's credentials.

ENROLLMENT

Total daytime enrollment for 1959-60 was 11,842; this is more than double the enrollment of ten years ago. Expected enrollment should reach 15,000 by 1965, and 22,000 by 1970. Fifty-five per cent of the students come from outside Utah, including the 50 states and 45 foreign countries. Membership in the Church of Jesus Christ of Latter-day Saints is **not** required for admission, although at the present time 95 per cent of the students are members. The other five



New Administration Building (under construction)

percent, as a condition of their continuance as students, are required to abide by the same standards of morality and integrity.

TUITION

Yearly tuition and fees total \$260 for both in-state and out-of-state students. Room and board costs \$580 per year, and the total cost (estimated) for the school year is \$1,000, which includes moderate personal expenses.

CAMPUS

The University campus major is located on a hill overlooking Provo and Utah Valley. There are 35 academic buildings, 13 service buildings, 40 residence halls, and 330 temporary family apartment units on campus. In addition there is an Alpine campus in Provo Canyon, a dairy farm, a poultry farm, and an agricultural farm.

... AND COMMUNITY

INDUSTRY

A combination of agriculture and industry support the Valley's economy. The county ranks first in the state in production of apples, pears, plums, prunes, strawberries, cherries, apricots and other crops. Utah County also leads in Grade A milk production. The largest industry in the county, however, is U.S. Steel's Columbia-Geneva Steel Division, which is located on a 1502-acre site near Utah Lake. Geneva employs an estimated 5,000 workers in the Valley.

FOUNDING

BYU was founded by Brigham Young as an academy in October 16, 1875 under the leadership of Karl G. Maeser. In 1903 the school became a university. It is owned and operated by the Church of Jesus Christ of Latter-day Saints (commonly called Mormon). It is the headquarters of the Church's widespread educational system.



New Library Building (under construction)

CURRICULUM

Today BYU is the largest church related university in the nation. A liberal arts, vocational and scientific curriculum is offered by 11 colleges and the graduate school. They are College of Biological and Agricultural Sciences, College of Business, College of Education, College of Family Living, College of Fine Arts, General College, College of Humanities and Social Sciences, College of Nursing, College of Physical and Engineering Sciences, College of Physical Education, College of Religious Instruction, and the Graduate School. An Air Force ROTC Detachment is also functioning on campus. Doctoral programs are available in 11 departments, and an Honors Program will begin with the 1960-61 school year. BYU uses the semester system.

... AND FACILITIES

ATHLETICS

BYU's Department of Athletics is a part of the College of Physical Education under Dean Milton F. Hartvigsen. With the exception of swimming, teams are represented in every sport. The school's intramural program offers basketball, football, badminton, golf, handball, horseshoes, softball, table tennis, tennis, volleyball, wrestling, swimming, skiing and track. The intramural program is financed by student fees.



Helaman Halls (men's residence)

FACILITIES

Hub of most athletic activity on campus is the George Albert Smith fieldhouse and its 28,950 square-foot extension. The original building houses a main floor (seating capacity 10,800), two large auxiliary gyms, wrestling room, boxing room, therapy room, weight lifting area, steam room, squash courts, handball courts, four classrooms plus numerous offices for coaches and faculty, and the usual shower and locker rooms. The extension, which was opened in January of this year, provides a huge indoor area and an extension of an indoor track. The indoor track offers a 120-yard straightaway, and several meets were held indoors this spring. The area is also used by physical education groups. BYU's track in the stadium is one of the best in the entire West, and facilities for field events, too, are modern and well preserved.

A modern baseball diamond, which was inaugurated three years ago, is located just north of the football stadium. In addition to the above facilities, the general athletic area includes 24 tennis courts, 8 softball diamonds, an outdoor basketball area, a pitch and putt course for golf, large football areas for practice and playing, horseshoe pits, and hard-top games area.

THE GOLDEN YEARS

A teammate of Mel's was **ROLAND MINSON** (49-51), who gave the fans as many thrills as any player in BYU history. Minson scored 619 points in one season, and had a three-year total of 1,375 (a school record). Roland was unanimous all-conference as a junior and senior, and was chosen MVP in the NIT tourney won by the Cougars in 1951.

Another member of that illustrious team was **JOE RICHEY** (50-53), a forward from St. Johns, Ariz. Joe was a second string choice in both Look and Collier's selection in '53. He also played on the West squad in the East-West game in Madison Square Garden.

Judged the finest floor general in the post-war period is **HAROLD CHRISTENSEN** (50-53.) Although no scoring sensation, Chris was his team's stabilizing force and set the plays in motion. As a sophomore he was a regular on the NIT team, and he played in the East-West game as a senior.

Helms choice on the second team of the AA selections in 1954 was **DEAN LARSEN** (52-54), who was also unanimous all-conference. Dean played with the college all-stars against the Globetrotters.

TERRY TEBBS, (54-56), a mite of a payer with big hands, came onto the scene the following year. Tebbs, who came to BYU as a freshman without the aid of a scholarship, was the first BYU player to be named to the UPI Little All-American team, an honor he gained two years in a row. The other half of the Mutt & Jeff duo was **HERSCHEL "BONES" PEDERSEN**.

JOHN BENSON (55-57) and **TOM STEINKE** (55-57) provided the spark for the BYU team that won the Skyline title in 1957. Both were all-conference. Benson was a fine rebounder and point-maker, while Steinke was a top scorer. Tom also made the UPI Little All-America team.

Key players in more recent years have been **JOHN NICOLL** (57-58), and **BOB SKOUSEN** ('58). The latter has two years eligibility remaining at BYU when he returns from a church mission in Australia.



A DECADE AGO—The Cougars were at the summit of basketball with NIT championship. Starting five consisted of Joe Richey, Roland Minson, Jerry Romney, Mel Hutchins, Coach Stan Watts and Harold Christensen.

There is a tendency in sports to embellish the past in direct proportion to its distance from the present. But in spanning the years in the era following World War II it is evident BYU has produced its share of basketball greats.

One of the most memorable was **JOE NELSON** (47-50), the wiry forward who scored a total of 1,317 points in three seasons. Joe was a second team choice on the Helms All-America selection, and was a member of the college all-star team that toured the country with the Globetrotters.

Most experts agree, however, that **MEL HUTCHINS** (48-51) was the most colorful of all BYU players to gain AA recognition. Marvelous Mel was first team choice on the Look, Sporting News, Helms and Converse AA selections, and was voted MVP in the East-West game in New York.



STAN WATTS



To those who follow the University's athletic fortunes, basketball and Stan Watts are one and the same. The gentleman who guides the BYU basketball fortunes is the head and heart of the school tradition.

The dean of the Skyline coaches, Stan is now in his 12th year as head varsity coach. The 1960 season was his first losing season in that time, and then he had to settle for fifth place. Considering the calibre of Skyline basketball, this is quite a tribute.

Stan is one of seven coaches in the country to win over 100 games in his first five years of college ball, and the trophy case in the George Albert Smith fieldhouse contains one NIT championship cup and three conference trophies.

WATT'S CONFERENCE RECORD

Opponent	Wins	Losses
Utah	11	16
Wyoming	18	9
Utah State	16	10
Colorado State	17	10
Denver	21	6
Montana	13	5
New Mexico	19	0
TOTALS	125	56

The above record includes all Skyline games for the 1959-60 season. The odd numbers are the result of extra games played in pre-conference tournaments.

Watts-coached clubs at BYU have always been colorful and offensively-gearred to good basketball. Stan handpicks his own schedule, and a year seldom passes but what the Cats don't touch both coasts in meeting the best.

Stan began his own athletic career at Murray High School, where he was an outstanding prep athlete. Later he enrolled at Weber Junior College in Ogden, Utah, where he won letters in all of the major sports. In 1936 he transferred to BYU, a school where he was destined to play an important role in Cougars' future athletic program. Before he graduated in 1938, he won two letters each in football, basketball and track. He climaxed his career in college by winning the trophy given the outstanding senior athlete.

Watts first stop as coach was at Millard County High School, and a second move took him to Dixie Junior College in St. George. Later he was appointed head basketball coach at Jordan High in Salt Lake County. In two seasons with the Beetdiggers his cage teams tied for the Big Nine championship.

In 1946 he came to BYU as freshman coach of both football and basketball. A short time later he was named assistant basketball coach and assistant director of athletics. And in 1949 he succeeded Floyd Millett as varsity basketball coach.

Stan has held several executive positions related to college basketball, and he has been the featured guest at several basketball clinics. He is a prolific writer of specialized articles on the cage game, and just recently had a book published on offensive basketball.

WATTS' COACHING RECORD

	W	L
1949-50	22	12
1950-51	40	9
1951-52	14	10
1952-53	22	8
1953-54	18	11
1954-55	13	13
1955-56	18	8
1956-57	19	9
1957-58	13	13
1958-59	15	11
1959-60	8	17
	202	121

Total: 323 Games
Percentage: .625



ASSISTANT COACH



FRESHMAN COACH



TRAINER

BOB BUNKER

Coach of the University's successful freshman basketball teams for the past four years, Bob Bunker joined the varsity staff last season as an assistant to Stan Watts.

Bob, a very likeable, warm personality, graduated from Utah State University in 1936. While at Logan he captained the Aggies' conference football champions and was a key player on the Ag basketball court.

Coach Bunker's first coaching assignment was at South Cache High School in Northern Utah. During World War II he served five years in the Army. He was commissioned a captain and served overseas in the European Theatre of Operations, and he is still active in the Reserves.

Coach Bunker came to BYU in 1949 as an assistant football coach to Charles "Chick" Atkinson. He was a member of the football staff until 1956, when he was appointed to the Cougars' basketball staff.

PETE WITBECK

Another campus figure who has been associated closely with BYU basketball is Alan "Pete" Witbeck, who is now in his second year as freshman basketball coach.

Prior to the 1959-60 season Pete's main chore on the staff was that of scouting BYU's cage opponents, a job he did with keen-eyed dedication.

Witbeck is a faculty member in the College of Physical Education. His main area of instruction has been in the area of skills for majors.

Pete lettered in track at BYU as a distance runner, and his coaching experience includes teams in industrial and amateur leagues in Utah.

ROD KIMBALL, TRAINER

Veteran member of the staff is Trainer Rod Kimball, who has served all but one of the last 22 years in this position. Long in experience and know-how, Rod is among the most popular men on campus.

A native of Jordan, Utah, Rod was an outstanding athlete and student leader at Jordan High. He won letters in two sports at Utah State and BYU in his college days, and in 1937 he was chosen as trainer for Cougar teams. Since then he has traveled countless miles with BYU teams, conditioning athletes and attending their ills. Rod is justly proud of his family of six sons and six daughters.

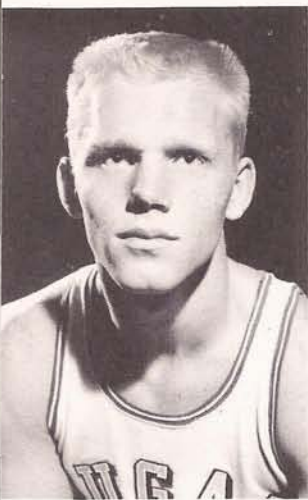
VARSITY ROSTER

No.	Player	Pos.	Ht.	Wt.	Age	Class	Exp.	Home Town
20	Jim Williams	Guard	5-10	157	19	Soph.	0	Wallace, Idaho
21	Roland Bevell	Guard	6-1	165	21	Senior	1	Batesville, Miss.
22	Robert Wilson	Guard	5-11	173	20	Junior	Tr.	Carmel, Indiana
23	Ron Steinke	Guard	5-10	153	19	Soph.	0	West Jordan, Utah
24	Larry Crowley	Guard	6-2	175	21	Junior	1	Hermosa Beach, Calif.
25	Gary Batchelor	Guard	5-10	166	19	Soph.	0	Layton, Utah
30	Gary Earnest	Guard	6-0	180	25	Senior	2	Longview, Wash.
31	Ron Abegglen	Guard	5-8	158	23	Senior	1	Vernal, Utah
32	Scott Iverson	Forward	6-3	189	20	Junior	Tr.	Downey, Calif.
33	Jim Kelson	Forward	6-2	178	19	Junior	0	Nephi, Utah
34	Gale Butler	Forward	6-5	200	20	Junior	Tr.	Sacramento, Calif.
35	Timo Lampen	Forward	6-5	200	26	Soph.	0	Lahti, Finland
40	Gail Johnson	Forward	6-4	189	19	Soph.	0	Van Nuys, Calif.
41	Gene Kunz	Forward	6-4	182	21	Junior	Tr.	Ogden, Utah
42	Jack Mannion	Center	6-6	201	23	Senior	0	Sandy, Utah
43	Bruce Burton	Forward	6-4	210	20	Soph.	0	Lomita, Calif.
44	Dave Eastis	Center	6-5	198	21	Senior	2	Denver, Colo.
45	Lloyd Johnson	Center	6-6	205	22	Soph.	0	Salt Lake City, Utah

FRESHMAN ROSTER

No.	Player	Position	Ht.	Wt.	Age	Hometown
20	Lynn Oborn	Guard	5-10	160	18	Payson, Utah
21	Richard Winkle	Guard	6-1	173	18	Niles, California
22	Kent Layton	Forward	6-6	170	18	Sanford, Colorado
24	Joe Hurst	Guard	6-2	175	18	Salt Lake City (Olympus)
25	Garr Jacobsen	Guard	5-11	185	17	San Diego, California
30	Marvin Richardson	Forward	6-5	175	19	Lander, Wyoming
31	Mike Payne	Forward	6-5	179	17	North Bend, Oregon
32	Bill Wylie	Forward	6-6	178	18	San Diego, California
33	Gerald Dahlman	Guard	6-3	187	18	Antioch, Illinois
34	Curtis Wilson	Guard	6-4	170	19	Cody, Wyoming
40	Dick Hansen	Forward	6-4	190	19	Independence, Missouri
41	Bruce Wilson	Center	6-8	198	18	Nephi, Utah
42	John Alstrom	Center	6-6	185	18	Fresno, California
35	Bill Blumenthal	Forward	6-5	192	18	Salt Lake City (Olympus)
44	Nolan Stott	Center	6-5	215	18	Fairfield, Utah

PLAYER SKETCHES



(20)—**JIM WILLIAMS** Guard, 5-10, 19, 153, Sophomore, Wallace, Idaho — An all-around athlete in his prep days at Wallace, Jim lettered in four sports and ranked high in scholarship. He showed steady improvement as a member of the freshman team . . . tanked 21 points in one of better performances with the Kittens . . . Williams has court poise . . . could develop into a top prospect . . . an accounting major.



(21)—**ROLAND BEVELL**, Guard 6-1, 21, Senior, Batesville, Miss. — Roland transferred to BYU last year from Northwest Junior College in Senatobia, Miss . . . he broke his wrist early in the '60 campaign and saw only limited action thereafter . . . vast improvement in his play has been noted, and he is hitting the basket with consistency. He lettered last spring as an outfielder . . . a P. E. major.



(22)—**ROBERT WILSON**, Guard, 6-1, 21, 182, Junior, Carmel, Indiana — Bob is one two transfers from Weber College in Ogden, Utah . . . he was teammate of Gene Kunz, Allen Holmes . . . averaged 15 points a game, has single game high of 32 points . . . he suffered an ankle injury at start of season . . . is now coming on strong . . . good hands, moves very well on the court, and is above average on defense . . . a business major with minor in psychology.

PLAYER SKETCHES

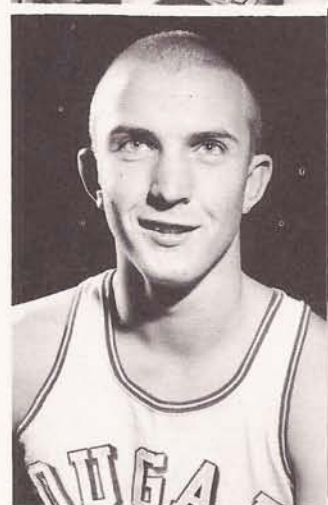
(23)—**RON STEINKE**, Guard, 19, 5-10, 157, Sophomore, West Jordan — A brother to former Little All-American Tom Steinke, Ron experienced wide acclaim in high school as two-year all-state guard for Granite H.S. in Salt Lake City . . . like Tom, Ron has phenomenal eye for jump shots, and can break a ball game wide open . . . had high of 32 in high school, 25 as frosh . . . a little lax in defense . . . doubles as an above-average baseball player . . . a P. E. major.



(24)—**LARRY CROWLEY**, Guard, 6-2, 21, 170, Senior, Ontario, California — Larry came to BYU last year as a transfer from Chaffey Junior College in Calif., where he set several scoring records . . . hit 41 points in one game, had 120 for four games in school invitational . . . played 12 games in '60 . . . won BYU letter last season, should be good reserve this winter . . . a history major . . . married to former Diane Nita Auld.



(25)—**GARY BATCHELOR**, Guard, 5-10, 20, 170, Sophomore, Layton, Utah — One of the finest all-around athletes in the high school ranks two years ago, Gary will undoubtedly see duty as perhaps a regular or key reserve . . . makes few mistakes, and is gifted with natural athletic sense . . . may not hit double figures, but will always give you steady floor game . . . excellent on defense . . . also a fine baseball player . . . P. E. major, math minor . . . married to former Colleen Cowley . . . two children: Bret 2, and girl, Bradi, 4 months.



PLAYER SKETCHES



(30)—**GARY EARNEST**, Guard, 6-0, 25, 180, Senior, Longview, Wash. — A regular since his first varsity game as a sophomore, Gary is now uncontested floor general . . . many believe he's the finest all-around guard in the league . . . he's tough on defense, uses every shot in the book, plus . . . averaged 13.9 in '59, 12.7 in '60 . . . was all-state in Washington, served hitch in Marines before coming to BYU . . . a P. E. major . . . married to former Ruth Robinson.

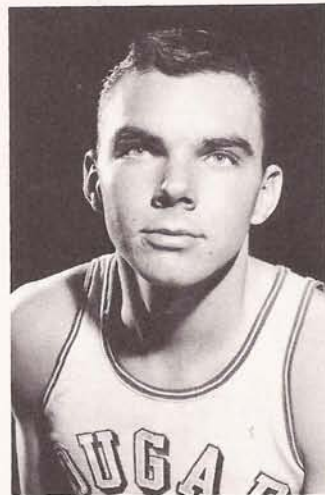


(31)—**RON ABEGLLEN**, Guard, 5-8, 23, 155, Senior, Vernal, Utah — The shortest man on the varsity, Little Abie is one of five seniors on '61 team . . . didn't letter as a frosh, almost overlooked . . . saw very little play as soph, but was an alternate starter on last year's team . . . is hard to stop on drives for the basket, has good jump shot, and is sticky on defense . . . P. E. major . . . married to former La Rae Young . . . one son, Kirk, 10 months.

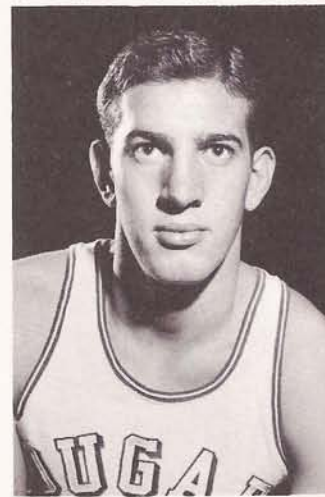


(32)—**SCOTT IVERSON**, Forward, 6-4, 170, 19 Junior, Downey, Calif. — A late bloomer, Iverson was just another player in high school . . . but was most improved player at Cerritos J. C. (Norwalk) for '59 . . . was MVP for same team in '60 . . . he's looking better all the time . . . moves well, seems to hit consistently . . . works well in Watts system . . . a P. E. major.

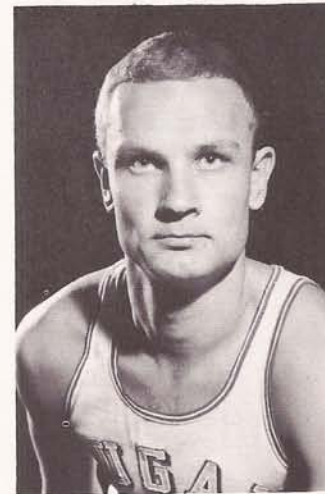
PLAYER SKETCHES



(33)—**JIM KELSON**, Forward, 6-2, 180, 19, Sophomore, Nephi, Utah — Jim was all-state for Juab H. S. in 1959, showed some college potential . . . last season as a frosh he averaged 17.1 points per game . . . Jim has good hands, a good eye . . . he may find the going rough against taller forwards . . . but he knows how to score . . . P. E. major.



(34)—**GAYLE BUTLER**, Forward, 6-5, 205, 19, Sophomore, Folsom, Calif. — Here is another player with great potential, especially for work in and around the boards . . . Gayle makes presence known on rebounding . . . is moderately strong in other phases of the game . . . a transfer from American River J. C. in Sacramento . . . was all-conference, held rebounding title there . . . a P. E. major.



(35)—**TIMO LAMPEN**, Forward, 6-5, 190, 26, Sophomore, Lahti, Finland — An import from Finland, Timo had a great season as a freshman two years ago . . . spent last year in homeland before returning in '60 . . . Timo is serious, dedicated player . . . will be key player on forward line . . . can score and use height to advantage . . . enrolled in General College.

PLAYER SKETCHES



(40)—**GAIL JOHNSON**, Forward, 6-3, 185, 19, Sophomore, VanNuys, Calif. — A reserve on the frosh last season, Gail has been working hard at winning a varsity berth . . . is much improved over '60 . . . is holding well to varsity pace . . . all-league in VanNuys . . . also excels in track as hurdler . . . was 5th in Skyline meet . . . a P. E. major.



(41)—**GENE KUNZ**, Forward, 6-4, 151, 21, Junior, Ogden, Utah — A broken bone sidelined Kunz soon after practice started this fall, so time may be needed to have him catch the field . . . Gene transferred to BYU from Weber, where he was a freshman player on team that reached the national finals . . . averaged 18 points a game for Weber . . . was all-state and won some national recognition at Ogden H. S. . . . P. E. major.

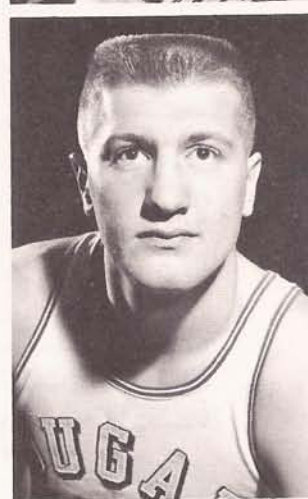


(42)—**JACK MANNION**, Center, 6-6, 190, 23, Senior, Bingham, Utah — Mannion, who may play center or forward for the Cougars, transferred from the U of U . . . had to sit out a year . . . but has remained active in city leagues . . . was all-state and All-American selection as a prep star at Bingham H. S. . . . P. E. major . . . married to former Terry Bullock . . . they have two children: John, 20 months, and Pace 2 months.

(43)—**BRUCE BURTON**, Forward, 6-4, 208, 20, Sophomore, Lomita, Calif. — Watts could hardly wait to get Burton on the varsity, and now we can see why . . . Bruce could become one of the school's greats . . . works hard . . . does nearly everything well . . . shoots southpaw . . . really works the boards . . . was selected to all-Church team before enrolling at BYU . . . two older brothers also played basketball . . . business major.

(44)—**DAVE EASTIS**, Center, 6-5, 210, 21, Senior, Denver, Colorado — By any measure Eastis must be numbered among BYU's greatest players, even before he enters his senior year . . . all-conference in '60 and an All-America candidate in '61 . . . competitive . . . an unrelenting, tireless workhorse . . . holds half a dozen BYU records . . . including 44 points scored in one game (against New Mexico) . . . best hook shot ever seen at BYU . . . averaged 20.1 points in '60, tallied 483 points . . . 48% from the field . . . all-state at Denver's North H. S. . . . business major . . . married to former Pat Ford.

(45)—**LLOYD N. JOHNSON**, Center, 6-6, 200, 24, Sophomore, Salt Lake City, Utah — Johnson reported to Stan Watts this fall after time spent in service (Army) and in church mission field (Uruguay for 2½ years) . . . Lloyd was just an average player at South High . . . but he now looks like one of the better college prospects . . . is working on hook shot . . . will be top reserve behind Eastis . . . accounting major.



1960 RESULTS

54.....	Washington	52
52.....	Washington	60
42.....	UCLA	62
61.....	USC	79
55.....	Kansas State	86
64.....	Kansas	96
79.....	Michigan State	75
79.....	Ohio State	91
93.....	Miami	110
74.....	Florida	65
*76.....	Loyola	84
63.....	Montana	58
51.....	Colorado State	53
73.....	Wyoming	52
69.....	Utah	76
53.....	Utah State	84
95.....	New Mexico	67
66.....	Denver	86
64.....	Utah State	75
75.....	Wyoming	70
53.....	Colorado State	65
75.....	Utah	87
67.....	Montana	87
68.....	Denver	88
75.....	New Mexico	69

*Overtime

(8-17)

1960 SKYLINE STANDINGS

	Skyline			All Games		
	W	L	Pct.	W	L	Pct.
Utah	13	1	.929	24	2	.923
Utah State	12	2	.857	22	4	.846
Colorado St.	10	4	.714	13	10	.565
Denver	8	6	.571	13	11	.542
Brigham Young	5	9	.357	8	17	.320
Montana	3	11	.214	7	17	.292
New Mexico	3	11	.214	6	19	.240
Wyoming	2	12	.143	5	19	.208

1960 SCORING

(25 GAMES)

PLAYER	POS.	GAMES	FGA	FGM	%	FTA	FTM	%	S.M.	RBDS.	P.F.	DISQ.	NO.	AVG.
Dave Eastis,	c	24	397	181	48	174	121	70	269	245	77	4	483	20.1
Gary Earnest,	g	25	380	119	31	102	81	79	282	80	78	6	319	12.7
Mark Miller,	f	20	203	92	45	94	68	72	137	219	54	2	252	12.6
Valoy Eaton,	f	25	174	76	44	41	25	61	114	80	57	3	177	7.1
Ron Abegglen,	g	21	107	44	41	51	36	71	78	46	42	1	124	5.9
Ron Bell,	f	22	119	43	36	41	29	71	88	102	40	2	115	5.2
Frank Berrett,	f	20	75	20	27	38	22	58	71	70	33	..	62	3.1
Brent Peterson,	f	15	63	16	25	11	5	45	53	46	19	..	37	2.5
Larry Crowley,	g	12	36	11	31	6	5	83	26	9	14	..	27	2.3
Dave Barber,	g	12	17	3	18	18	10	56	22	14	13	..	16	1.3
Bruce Hill,	f	8	22	7	32	2	0	..	17	17	2	..	14	1.8
Ron Bevell,	g	4	11	2	18	6	2	33	11	1	2	..	6	1.5
Bob Inglis,	c	3	4	2	50	4	1	25	5	2	1	..	5	1.7
Bob Inglis,	c	3	4	14	..	25	11	..	48	237	27	..	39	..
ALL OTHERS:			45	14
BYU Totals:		25	1653	630	38	613	416	68	1220	1168	459	18	1676	67.0
OPP. Totals:		25	1820	717	40	662	443	67	1322	1374	446	18	1877	75.1

FIELDHOUSE RECORDS

— INDIVIDUAL MARKS —

- Most points scored in one game:
44 by Dave Eastis (BYU) on Feb. 5, 1960)
- Most field goals in one game:
21 by Dave Eastis (BYU) on Feb. 5, 1960
- Most field goals attempted in one game:
45 by Henry Ohlen, (Texas Christian) on Dec. 12, 1953.
- Most free throws attempted in one game:
23 by Dean Parsons, (Washington) on Dec. 11, 1954.
- Most free throws scored in one game:
16 by Dean Parsons, (Washington) on Dec. 11, 1954.
16 by Bruno Boin, (Washington) on Dec. 1, 1956
- Most rebounds in one game:
26 by John Benson, (Brigham Young) on Dec. 1, 1956 against Washington.

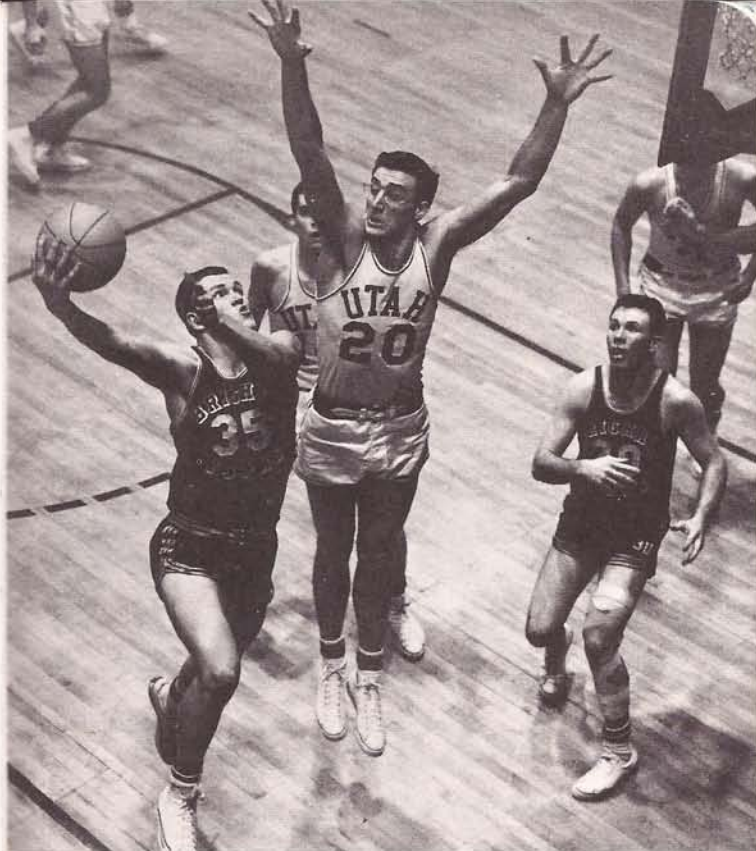
— TEAM MARKS —

- Most points scored in single game:
95 by Brigham Young against Montana University, (Feb. 25, 1956)
95 by Brigham Young against New Mexico (Feb. 5, 1960)
- Most field goals attempted in one game:
108 by Brigham Young against Montana University, (Jan. 30, 1953)
- Most field goals scored in one game:
40 by Brigham Young against Colorado State (Feb. 21, 1959)
40 by Brigham Young against New Mexico (Feb. 5, 1960)
- Most free throws attempted in one game:
47 by Murray State against BYU (Dec. 19, 1953)

FIELDHOUSE ATTENDANCE MARKS

Year	Games	Total	Game Avg.
1951-52	10	66,640	6,664
1952-53	12	79,196	7,711
1953-54	14	84,247	6,018
1954-55	12	68,702	5,725
1955-56	14	116,103	8,286
1956-57	12	94,872	7,906
1957-58	12	95,533	7,961
1968-59	12	91,422	7,619
1959-60	11	75,171	6,834
TOTAL	109	771,886	7,082

Attendance Record: 11,614, Utah State, Feb. 9, 1956.



- Most free throws made in one game:
39 by Brigham Young against Utah State University, (Jan. 25, 1957)
- Most rebounds in one game:
73 by Brigham Young against Wyoming (Feb. 20, 1959)
- Largest combined point total for one game:
169 by BYU and Utah State, (Jan. 25, 1957)
- Most points scored in one quarter:
33 by BYU in second quarter against Montana, (Feb. 25, 1956)

— HIGH FOR BYU PLAYERS —

- Most points scored by BYU player:
44 by Dave Eastis against New Mexico (Feb. 5, 1960)
- Most field goals attempted:
36 by John Nicholl against New Mexico. (Feb. 7, 1958)
- Most field goals scored in one game:
21 by Dave Eastis against New Mexico (Feb. 5, 1960)
- Most free throws attempted in one game:
16 by John Benson against Montana (Jan. 4, 1957) hit 15.
20 by John Nicholl against Utah (Jan. 24, 1958, SLC)



SCHOOL RECORDS

— MODERN SCORING MARKS —

Most points in one game:

44 by Dave Eastis against New Mexico (Feb. 5, 1960)

Most points in one season:

619 by Roland Minson (1950-51)

Most rebounds in one season:

471 by Mel Hutchins in 1950-51 (12.8 avg.)
 317 by John Benson in 1956-57 (11.3 avg.)
 314 by Herschel Pedersen in 1955-56 (11.3 avg.)
 307 by John Nicoll in 1957-58 (11.8 avg.)
 292 by Nick Mateljan in 1952-53 (9.7 avg.)
 276 by Nick Mateljan in 1953-54 (10.6 avg.)
 255 by John Benson in 1955-56 (10.0 avg.)
 245 by Dave Eastis in 1959-60 (10.2 avg.)
 239 by Bob Skousen in 1958-59 (9.8 avg.)

Best rebound average for one season:

12.7 by Mel Hutchins, 1951 (471 for 37 games)
 12.1 by Herschel Pedersen, 1956 (314 for 26 games)
 11.8 by John Nicoll, 1958 (307 for 26 games)
 11.3 by John Benson, 1957 (317 for 28 games)
 11.3 by Herschel Pedersen, 1955 (293 for 26 games)
 10.6 by Nick Mateljan, 1954 (276 for 26 games)
 10.2 by Dave Eastis, 1960 (245 in 25 games)
 10.0 by John Benson, 1956 (222 for 25 games)

RECORDS

All-time top scorers for three seasons (sophomore, junior and senior years):

1375—Roland Minson (49-50-51)
 1317—Joe Nelson (48-49-50)
 1117—Joe Richey (51-52-53)
 1084—Mel Hutchins (48-50-51)
 964—John Benson (55-56-57)
 919—Terry Tebbs (54-55-56)
 888—Herschel Pedersen (54-55-56)
 807—Nick Mateljan (52-53-54)
 683—John Nicoll (58-59)

Most points in one season (400 or more points):

619—Roland Minson (1950-51) 16.7 avg.
 571—Mel Hutchins (1950-51) 15.4 avg.
 529—Joe Nelson (1948-49) 15.5 avg.
 517—John Benson (1956-57) 18.4 avg.
 511—Tom Steinke (1956-57) 19.7 avg.
 511—Joe Richey (1952-53) 17.6 avg.
 506—Terry Tebbs (1955-56) 19.5
 483—Dave Eastis (1959-60) 20.1
 463—John Nicoll (1957-58) 17.8 avg.
 462—Bob Skousen (1958-59) 17.7 avg.

Highest scoring average for one season:

20.1—Dave Eastis (1960)
 19.7—Tom Steinke (1957)
 19.5—Terry Tebbs (1956)
 18.4—John Benson (1957)
 17.8—John Nicoll (1958)
 17.7—Bob Skousen (1959)
 17.6—Joe Richey (1953)
 16.7—Roland Minson (1951)
 16.1—Herschel Pedersen (1955)
 15.5—Joe Nelson (1949)

Best three-year scoring average:

15.1—Joe Nelson (15.3, 15.5, 14.5)
 13.2—Roland Minson (10.8, 12.0, 16.7)
 13.6—Joe Richey (8.7, 14.6, 17.6)
 12.5—Nick Mateljan (11.2, 13.0, 13.3)
 12.4—Terry Tebbs (3.3, 14.6, 19.5)
 12.2—Herschel Pedersen (4.3, 16.1, 14.5)
 11.1—John Benson (10.2, 7.8, 18.4)
 11.0—Mel Hutchins (6.4, 11.3, 15.4)
 *17.1—John Nicoll (17.8, 15.7)

*Junior, senior after transfer.

Most team rebounds in one season:

1457 (1950-51)

Best team rebounding average:

55.8 (1955-56)

Best team offensive average:

77.2 (1955-56)

Greatest offensive-defensive margin:

12.6 (1952-53) Offense 68.1, Defense 55.5

Best team field goal average:

.412 (1959)

PAST CHAMPIONS

1927	Montana State
1928	Montana State
1929	Montana State
1930	Utah State
1931	Utah University
1932	Brigham Young
1933	Brigham Young
1934	Brigham Young
1935	Utah State
1936	Utah State
1937	Montana State
1938	Utah and Colorado
1939	Colorado University
1940	Colorado University
1941	Wyoming University
1942	Colorado University
1943	Wyoming University
1944	Wyoming University
1945	No Schedule (World War II)
1946	Wyoming University
1947	Wyoming University
1948	Brigham Young
1949	Wyoming University
1950	Brigham Young
1951	Brigham Young
1952	Wyoming University
1953	Wyoming University
1954	Colorado A & M
1955	Utah University
1956	Utah University
1957	Brigham Young
1958	Wyoming University
1959	Utah University
1960	Utah University

In the above table only western division champions are listed through 1937. 1938 was the first year which saw a full conference schedule between teams on both sides of the Rockies.

TOURNAMENT RECORD

1949-50

Dec. 8-9-10	— Conference Pre-Season Tournament at Denver	(3-0)
Dec. 13-17	— Los Angeles Invitational at Los Angeles	(1-2)
	NCAA Playoff at Kansas City	(1-1)

1950-51

Dec. 28-29-30	— Conference Tournament at Denver	(2-1)
March 12-17	— National Invitational Tourney at New York City	(3-0)
March 21-24	— NCAA Tournament at Kansas City	(2-1)

1951-52

Dec. 28-29	— Sugar Bowl Tournament at New Orleans	(0-2)
------------	--	-------	-------

1952-53

Dec. 28-29-30	— Dixie Classic at Raleigh, N.C.	(2-1)
March 9	— National Invitational Tourney at New York City	(0-1)

1953-54

Dec. 26	— Holiday Festival at Madison Square Garden	(1-2)
March 8	— National Invitational Tourney at New York City	(0-1)

1955-56

Dec. 27-28	— Motor City Tournament at Detroit, Michigan	(2-0)
------------	--	-------	-------

1956-57

Dec. 26-29	— Holiday Festival at New York City	(2-1)
Mar. 15-16	— NCAA Western Regionals at Corvallis, Ore.	(1-1)

1958-59

Dec. 27-29	— Queen City Invitational at Buffalo, N. Y.	(0-2)
------------	---	-------	-------

1959-60

Dec. 28-29	— Hurricane Invitational at Miami	(1-1)
------------	-----------------------------------	------	-------

BYU ATHLETE'S CREED

I am a Brigham Young University athlete—

. . . I know that my body is created in the image of God. It is His gift, and the temple of my spirit.

. . . Therefore, I will keep my mind and body strong and clean. I will never defile them with strong drink, noxious drugs, stimulants, or overindulgence of any kind.

. . . Since it is my duty and privilege to keep in the best possible physical condition, I will observe all the rules of good health and never flinch from the rigors of training.

. . . Although I am an athlete, I am first and foremost a student.

. . . Because I am blessed with skill and strength, I will devote my talents to the glory of Brigham Young University, and as long as I am a member of its studentbody observe the ideals of the amateur.

. . . Although adverse forces may be ranged against me, I will always do my best to win. But winning will be incidental to playing the game well, for I will never let the desire to win deceive me into any dishonest, unsportsmanlike, or ungentlemanly act.

. . . If I win, I shall be grateful. If I lose, it will be only because my opponent is better than I, and I shall be the first to shake his hand.

. . . When I compete as an individual, I will do my best to remember that the glory of B.Y.U. rests upon my shoulders alone. I will bend every effort of brain, muscle and sinew for that glory.

. . . When I compete in team sports, I will do my best to perform my part well and earn the confidence of my teammates. When I have the choice, I will let my companion make the score.

. . . I am honored because thousands of men, women, and children follow the athletic fortunes of my school and watch me perform. Therefore, I will always give them my best efforts and never do anything which will disappoint them.

. . . I know that my reputation as an athlete goes with me beyond the playing field, and, consequently, I will try to make it synonymous with the role of a gentleman, both at home and away, reflecting the standards of B.Y.U. in dress and conduct.

NEWS OUTLETS

SALT LAKE CITY

Hack Miller, Dee Chipman, Sports Editors, Deseret News-Telegram (P.M.), 33 Richards Street

John Mooney, Bob Williams, Sports Desk, Salt Lake Tribune (A.M.), 143 South Main

Dean Bennett, Sportscaster, Station KSL, Union Pacific Building
Sports Radio Station KALL, 146 South Main

Sports Editor, Radio Station KUTA, 179 Social Hall Ave.

Steve Smilanich, Sports Writer, United Press-International, Tribune Building

Sports Editor, Associated Press, Tribune Building

Sports Editor, Station KDYL, 143 South Main

Paul James, Station KCPX, Social Hall Ave.

Don Spainhower, KSL-TV, Social Hall Ave.

Sports Editor, Station KUTV, Social Hall Ave.

PROVO

Ray Schwartz, Sports Editor, Provo Daily Herald (P.M.) 190 West 4th No.

Linn Rockwood, Station KOVO

Dave Weiser, Sports Editor, Station KEYY, 172 West Center

Sports Editor, Station KBYU, BYU Campus

Sports Editor, Station KIXX, Provo 1200 South University

Sports Editor, Universe, Student Newspaper, BYU Campus

OTHER AREAS

Al Warden, Sports Editor, Ogden Standard-Examiner, Ogden Utah

Sports Editor, Logan Herald Journal, Logan, Utah

Sports Editor, Station KSUB, Cedar City, Utah

John Henry, Station KOA, Denver

Chet Nelson, Sports Editor, Rocky Mountain News, Denver, Colorado

George Franco, Denver Post, Denver, Colorado

Frank Pitman, Associated Press, Denver, Colorado

Gene Meakins, United Press-International, Denver

Larry Birleffi, KFBC, Cheyenne

Bob Brachman, San Francisco Examiner, San Francisco, California

“There need be nothing debasing in wholesome contest . . . In a sense life itself is a contest in the counterplay of all forces, physical and spiritual, which affect our living; and the development of strength and virtue comes largely out of such contests Every university which permits its teams to play against ours does us a favor. When their teams come here, they are our guests. I would like to see this fieldhouse become noted for its hospitality in the treatment of our visitors.”

Pres. Stephen L Richards
Dedication of George Albert
Smith Fieldhouse, Dec. 1, 1951